

COMPREHENSIVE GBV REPORT

2020

HARARE, ZIMBABWE



BACKGROUND

The Civic Forum on Human Development (CFHD) is part of the International Organization for Migration (IOM) led consortium that is implementing a collaborative project in Zimbabwe titled “Scaling up Coordinated Protection, Promotion and Enforcement of Human Rights for Citizens and other Vulnerable groups including Internally Displaced Persons in Zimbabwe” with funding from Swedish International Development Cooperation Agency (SIDA) for a period of 3 years. CFHD actively participated on the 16 days of activism against gender based violence to cement its goal of insuring human rights protection and promotion. In commemorating the 16 days of activism against gender based violence, CFHD conducted GBV Learning Platforms in eight provinces of Zimbabwe and these were facilitated at the CFHD Centre for Women and Girls Support Networks in Zimbabwe which promotes evidence based learning and response support services to affected community members and citizens.

The report is focused on the identified GBV issues affecting communities, approaches in place in handling GBV issues, sensitization on available referral pathways ,the roles being played by community leaders, CBOs and other institutional organization, Challenges , gaps and the identified action plans within the eight provinces of Zimbabwe.

OBJECTIVES

- ❖ To create a shared understanding of the emerging GBV issues and response mechanisms that are needed for addressing key human rights challenges
- ❖ To facilitate access to information and technical service for addressing emerging GBV issues,
- ❖ To motivate and support local CBOs and communities to develop local GBV Action Plans
- ❖ To document lessons learnt in the process for wider sharing across the WGSN.

Identified Types of Gender Based Violence (GBV)

The learning platform workshops enabled the communities to air out various types of GBV that are being faced by communities:

Sexual Abuse and Sexual Harassment

This was identified as most topical concern for women especial those who are in the formal sector and those in tertiary institutions. There is so much clientilism between the senior staff members and those at the lower level and women are ended up being abuse to secure their positions. In tertiary institutions the girls are now forced to get into forced relationships and sexual intercourse with lecturers so as to get good transcript results.

Physical Abuse

The communities identified physical and political motivated abuse as types of abuse that are affecting communities. The patriarchal nature of society in Zimbabwe accompanied by the customary law has been reported to be increasing women abuses within their families and women have now accepted physical abuses as part of the community norms especially when it's being done by men. There was a report in Mutare that breadwinners are abusing their wife's and families to the extent that even the women in the public sphere do not have access and liberty to the wages that they are getting because of the capitalistic nature of society that perceive men as the **ones** that own the means of production. It was also noticed that even the women in the public sphere are limited to positions of power and most of them are doing private sphere duties in their work places like secretarial duties and they are continuously facing verbal abuses from their male counterparts. Politically, women have reported that there is social unrest to women in politics and some are being threatened, raped and abducted just to discourage them in participating in political spheres. One of the participants in Masvingo highlighted that this is not only affecting women but men as there is also a documented record of men abductions in Zimbabwe and at community level these men are not being included in beneficial programmes and donor projects as they are being regarded as sellouts. Aggravated abuse was mentioned in Masvingo as an issue affecting young men and youths by old women and it is becoming difficulty for men to report their GBV issues to institutions like Police as there is this stereotypical believe that men cannot be abused by women and instead of assisting the victim they end up discouraging the victim "Urimukadzi Chaiye" meaning you should not report GBV cases when you are a men.

Emotional Abuse

Having mentioned various types of abuses that are daily faced by women and men emotional abuse has been identified as the end result caused by all forms of abuses and most victims are finding hard to share their GBV issue with relevant stakeholders basing on the patriarchal

nature of society that prohibits women and men to share their concerns with relevant human rights organization and other community referral pathways. Resultantly, many of them are suffering from mental stress living in isolation and despair and some victims are committing suicide.



Mutoko GBV learning platform workshop

Causes of Gender Based Violence

- ❖ There is serious acute poverty in the communities and this was exacerbated by the COVID-19 national lock down where the perpetrators and the victims were forced to be at home.
- ❖ Patriarchal nature of the society that deprives the rights of women and girls.
- ❖ Food insecurity.

- ❖ Water crisis due to limited water points. Many rape cases have been recorded of women and girls as they will be moving around in search of water.
- ❖ Gold panning has been reported as the major cause of physical violence in Makahara(Mutoko) and Mufuri in Shurungwi .
- ❖ Early marriages and child marriages
- ❖ Stereotypical beliefs that men cannot be abused by women.
- ❖ Disability within families is now causing emotionally and physically abuse
- ❖ Religious beliefs

Existing Referral Pathways

The communities identified existing referral pathways within communities which are:

Traditional and Community leaders

Traditional and community leaders have been identified as the first touch point to all GBV issues. However there was an argument that these community courts are the once that are also forcing women to stay in abusive marriages because of the African cultural values and believes. There was a contribution in Mutoko that the traditional leader are not aware of the constitution and more community GBV cases like child marriages and rape are being resolved through retributive justice . The traditional leaders are now addressing issues that is above their jurisdiction and on rape cases some traditional leader are charging goats which are not even equivalent to the GBV issues committed. There was a comment in Shurugwi that the traditional leaders are now corrupt to the extent that they are now receiving bribes from the perpetrators just to water down the reported GBV cases. There were three victims from Mutare that were present in the workshop that reported the GBV cases from their village heads and the Chief and they were being chased away from the village because there were refusing to pay the Chief.

Legal Institutions

There was an appreciation of Victim friendly Unit (VFU) presence within the eight provinces and their initiative of installing letter box in public places. However there is an outcry that these institutions are positioned far from the communities and citizens are ending up resolving GBV issues at family level where the perpetrators will be in control. It was added

that these institution are also offering counselling services because of how they have socialized with people instead of bringing about justice to the victims and the perpetrator's. This is resulting in continuous abuse of victims and communities are now hesitating to push GBV issues over to the VFU. There was a survivor from Masvingo learning platform workshop who, mentioned that she was even consulted by the police officers to withdraw her case after she was physically abused by another police officer.

Community Based Organizations CBOs

The Community Based Organizations have been identified as an important arm in the establishment of support system for survivors, facilitating support and safety nets for Victims and in providing support and security to victims who are dependent to the perpetrator. In addition CBOs facilitate community dialogues on GBV and education and awareness against GBV among communities.

Religious Leaders

Communities highlighted that religious fundamentalism is now deep rooted within communities and GBV issues are being resolved at church level and communities are trusting their religious leaders more than institutions. Couples are being taken for counselling instead of seeking justice especially on issues of physical violence and women are discouraged to report their cases to legal institution if there are on positions of influence at church. There was a comment in Shurugwi that some church leaders especially white garment churches are marrying young girls and convincing their congregants that it's an instruction from God.



Rebecca Mauru In Masvingo leading Session on Referral pathways



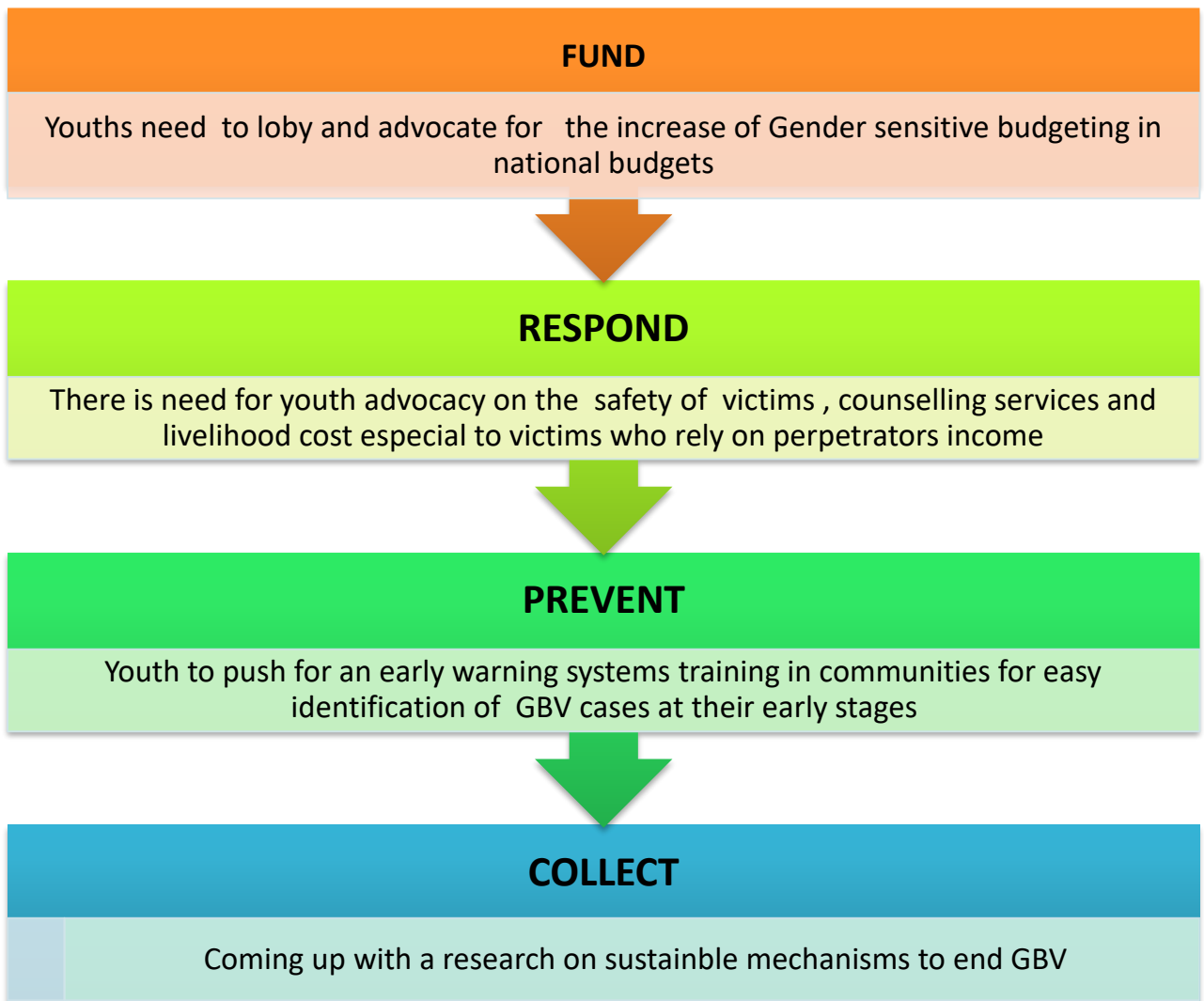
Blessing Moyo in Mutoko leading session on referral pathways

AWARENESS ON GENDER BASED VIOLENCE

The learning platforms were also programmed in a way that accommodated representatives from ministry of youth. The representatives emphasized the need to come up with community consolidated efforts in fighting against gender based violence throughout the year so that when communities meet next year it will be a reflection of successes stories and action plans towards GBV. Representative from Mutoko district also mentioned the need for youths to be the driver's human rights protection and promotion. The presenters also went through the 2020 Theme for the 16 days of activism against gender based violence and how the youths were responsible in participating in all these processes.



Mr Dube from the Ministry of Youth presenting on the need for youth participation on GBV



IDENTIFIED CHALLENGES AND PROPOSED ACTION PLANS

Area	Challenges	Action plans
Shurugwi	<ul style="list-style-type: none"> • Weak institutional frameworks • Harmful social norms that sustain GBV • The clinics have been reported to be handling child pregnancies and child STI issues but there 	<ul style="list-style-type: none"> • There is need for training and capacity building to relevant institutions working on GBV issues. It was highlighted that these trainings must also accommodate traditional leaders, religious leaders and CBOs. • There is need for constitutional material packs written in local languages.

	<p>is no binding law that empower the nurses to refer these cases to relevant institutions.</p> <ul style="list-style-type: none"> • Communities are marrying based on height not age • Gold panning sites have been identified as the centers of physical violence in Shurungwi and efforts to alarm the police have been unfruitful. 	<ul style="list-style-type: none"> • Community sensitization and awareness needs to be strengthened • Setting up of a nearing police stations that are effective in their operations. • There was a request that CHFD should continue to train communities on GBV issues also collaborate with layers associations in their workshops
Mutoko	<ul style="list-style-type: none"> • Lack of legal resource centers in the wards • Lack of community confidence to speak out, report and seek advice on GBV issues • Patriarchal society that discourage women participation in decision making • Limited Human rights material packs for communities. • Poverty 	<ul style="list-style-type: none"> • There is need for local law experts or local stations to report the GBV cases. • There is need for community training and capacity building on GBV issues to enhance community confidence and strengthen awareness's. • There need to come up with GBV DAT that ensure that all the reported cases are attended to and reported to relevant institutions. • Income generating projects are also needed to reduce poverty and empower women. • More awareness campaigns with separate age groups and gender so that they can share the real situation affecting them.

		<ul style="list-style-type: none"> • Engaging policy makers through the submission of position paper on GBV. • More learning platforms, awareness campaigns and IEC materials to stimulate the communities to respond to GBV. • There is need to come up with a local radio station to raise awareness on GBV. • To come up with a human right watch WhatsApp group to monitor human right abuses within communities and refer them to relevant institutions.
Masvingo	<ul style="list-style-type: none"> • Lack of gender sensitivity in programming • Lack of support system that helps survivors • Patriarchal beliefs within communities. • Peer educators relationships with communities have weakened their ways of operation • Church doctrines that support GBV 	<ul style="list-style-type: none"> • Increase awareness against GBV among community and religious leaders • Capacitate youths and peer educators on social accountability on GBV issues • Facilitate comprehensive GBV workshop that is inclusive of the hard to reach religious leaders
Mutare	<ul style="list-style-type: none"> • Cultural stereotypical perceptions about men are hindering them to report cases to relevant institutions 	<ul style="list-style-type: none"> • There is need for community training on Human rights issues and gender based violence awareness training • There is need for school training workshops on GBV

	<ul style="list-style-type: none"> • CBOS within their communities are not doing justice to these GBV issues and by virtue of being in communities the employees are failing to resolve the issues based on the relationship which was established through socialization. • Teacher student sexual abuses 	<ul style="list-style-type: none"> • Community Case Workers(CCW) needs training on GBV and work ethics as there is now less confidentiality to GBV issues • Councilor to organize GBV training programme for the traditional leaders and local CBOs. • There is need for youth GBV training workshop • CFHD to continue support women with human rights training as they are the most victims of GBV.
Hatcliff	<ul style="list-style-type: none"> • Cultural norms that were buttressed by the customary law have become a hindrance to Human rights protection. 	<ul style="list-style-type: none"> • There is need for community sensitization on human right promotion.
Epworth	<ul style="list-style-type: none"> • Weak GBV referral pathways. • Political infiltration in GBV and human rights promotions. 	<ul style="list-style-type: none"> • There is need for proper training of existing CBOs on GBV and human rights protection